

---

# Anniversary Clock Identification

by  
Mervyn Passmore

Anniversary Clock Identification by Mervyn Passmore contains information, data and images on the majority of mass-produced Anniversary Clocks manufactured during the last 100 years.

This document is a small extract from the book, but please remember that these pages are copyright, and are normally only available to readers of the book.

This document is provided electronically to enable readers of the book to be able to exchange information about the clocks they own or are selling to fellow collectors or potential buyers.

To purchase your own copy of Anniversary Clock Identification, contact your local bookseller quoting the ISBN number of the book:



ISBN 978-0-907109-04-4

Copies can be obtained from many Clock Parts Distributors, online booksellers, on Ebay or direct from the distributors.

Many Public Libraries will obtain books by request.

**Distributed by Meadows & Passmore Ltd.**  
**1 Ellen Street, Portslade, Brighton BN41 1EU sales@m-p.co.uk**

Copyright © Mervyn Passmore 2009

Manufacturer:

**Badische Uhrenfabrik**

Model:

**Badische Standard Early,  
72mm x 91mm x 31mm**

Backplate information:

**Unmarked**

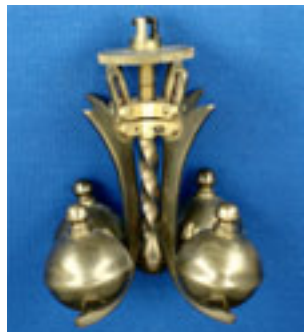
Movement ID code: **AH-SE**

Notes:

This movement was used widely on clocks made by Kienzle Clock Factories. It has no pivot adjuster. Although previously thought to have been manufactured by Badische, it is highly unlikely that Kienzle Clock Factories would have bought movements from them.



*Typical bracket on the early movement.*



# I-4 Badische

## Badische Standard, Early 72 x 91 x 31mm

### Notes

Despite Kienzle Clock Factories being a manufacturer, this Badische/Huber movement was used widely in their 400 day clocks.

*Due to variations in suspension supports and bobs, you may have to use blocks and wires other than those shown.*



*Lantern pinions are made with wires, not solid steel.*



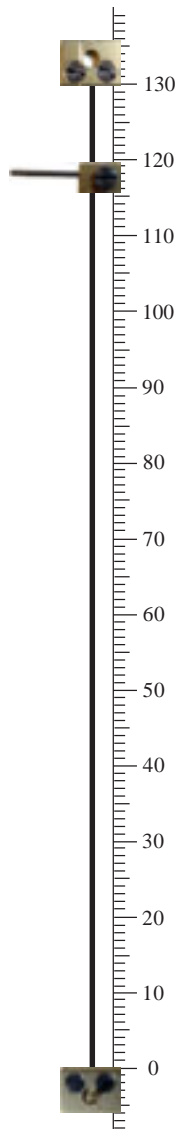
*No pivot adjuster.*

### Rapid Recognition Tips

Very few 400 day clocks have lantern pinions. These, combined with a 72mm x 91mm plate with no pivot adjuster, indicate this movement.

### Data

|                          |  |
|--------------------------|--|
| Movement ID Code .....   | <b>AH-SE</b>                               |
| Plate shape .....        | <b>Rectangular</b>                         |
| Plate width .....        | <b>72mm</b>                                |
| Plate height .....       | <b>91mm</b>                                |
| Gap between plates ..... | <b>31mm</b>                                |
| Escapement type .....    | <b>Pin pallet</b>                          |
| Original key size .....  | <b>4.50mm</b>                              |
| Winding side .....       | <b>Left</b>                                |
| Pivot adjuster .....     | <b>None</b>                                |
| Locking device: .....    | <b>None</b>                                |
| Pendulum type/s .....    | <b>4-ball</b>                              |
| Mainspring barrel .....  | <b>22.5mm x 43mm</b>                       |
| Replacement wire .....   | <b>No. 17 (Horolovar™ 0.0037"/0.094mm)</b> |
| Replacement unit .....   | <b>None, you must assemble your own</b>    |
| Jig settings .....       | <b>118mm, 130mm</b>                        |
| Mainspring .....         | <b>20 x 0.40 x 38mm (1350mm)</b>           |
| Beats per minute .....   | <b>8</b>                                   |
| Bob weight .....         | <b>280g.</b>                               |



Examples of clocks fitted with the Badische Uhrenfabrik/Huber early movement



Passmore 2009