

---

# Anniversary Clock Identification

by  
Mervyn Passmore

Anniversary Clock Identification by Mervyn Passmore contains information, data and images on the majority of mass-produced Anniversary Clocks manufactured during the last 100 years.

This document is a small extract from the book, but please remember that these pages are copyright, and are normally only available to readers of the book.

This document is provided electronically to enable readers of the book to be able to exchange information about the clocks they own or are selling to fellow collectors or potential buyers.

To purchase your own copy of Anniversary Clock Identification, contact your local bookseller quoting the ISBN number of the book:



ISBN 978-0-907109-04-4

Copies can be obtained from many Clock Parts Distributors, online booksellers, on Ebay or direct from the distributors.

Many Public Libraries will obtain books by request.

**Distributed by Meadows & Passmore Ltd.**  
**1 Ellen Street, Portslade, Brighton BN41 1EU sales@m-p.co.uk**

Copyright © Mervyn Passmore 2009

Manufacturer:

**Uhrenfabrik Herr & Uhrenfabrik M. Reiner**

Model:

**Herr/Reiner Miniature Late  
8" (200mm) dome  
44mm x 70mm x 23mm**

Backplate information:

NO (0) JEWELS

UNADJUSTED

MADE IN GERMANY

Normally unbranded, but may be marked  
Euramca Trading, or Uhrenfabrik Herr or  
Forrestville



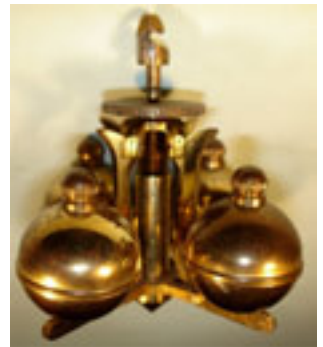
Movement ID code: **HR-ML8**

Notes:

This is the miniature model, with the top suspension guard screw below the anchor pivot hole.  
**This information applies to this movement when used in a miniature clock with an 8" (200mm) dome, but not when used in the standard clock under a 10" (250mm) dome.**



*Note that the top guard screw is below the anchor pivot hole on the late model*



# 17-20 U. Herr/Reiner

Anniversary Clock Identification by Mervyn Passmore

## Herr/Reiner Miniature Late

8" (200mm) dome

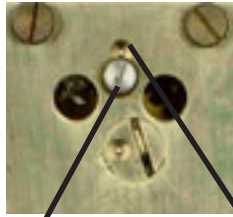
44 x 70 x 23mm

### Notes

It is important to verify the position of the upper screw hole on the guard relative to the anchor pivot hole (the top pivot hole).

On this later model the screw is below the pivot hole.

On the 8" (200mm) dome model there is no gap between the platform and the movement



Screw hole Pivot hole



On the 8" dome model there is no gap between the platform and the movement

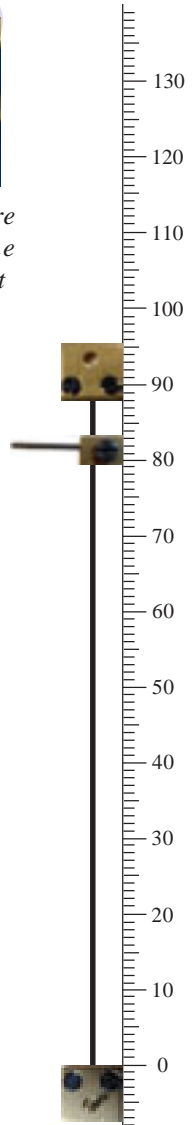
### Rapid Recognition Tips

This and the other 44mm x 70mm Reiner movements have their ratchet wheel bracket more than half way up the side of the backplate.

Note the lack of gap between the platform and the plates.

### Data

Movement ID Code .....	<b>HR-ML8</b>
Plate shape .....	<b>Rectangular</b>
Plate width .....	<b>44mm</b>
Plate height .....	<b>70mm</b>
Gap between plates .....	<b>23mm</b>
Escapement type .....	<b>Dead Beat</b>
Original key size .....	<b>4.00mm</b>
Winding side .....	<b>Right</b>
Pivot adjuster .....	<b>Eccentric nut</b>
Locking device: .....	<b>Beneath the base</b>
Pendulum type/s .....	<b>4-ball</b>
Mainspring barrel .....	<b>19mm x 39mm</b>
Replacement wire .....	<b>No. 9 (Horolovar™ 0.0028"/0.071mm)</b>
Replacement unit .....	<b>HR-MLS (Horolovar™ 28C)</b>
Jig settings .....	<b>82mm, 88mm</b>
Mainspring .....	<b>16 x 0.45 x 36mm (1039mm)</b>
Beats per minute .....	<b>8</b>
Bob weight .....	<b>275g.</b>



Examples of clocks fitted with the Herr/Reiner miniature late movement under 8" dome



Mervyn Passmore 2009