

---

# Anniversary Clock Identification

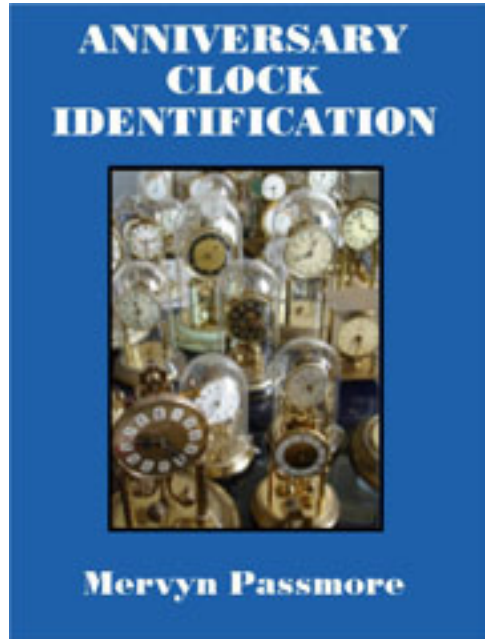
by  
Mervyn Passmore

Anniversary Clock Identification by Mervyn Passmore contains information, data and images on the majority of mass-produced Anniversary Clocks manufactured during the last 100 years.

This document is a small extract from the book, but please remember that these pages are copyright, and are normally only available to readers of the book.

This document is provided electronically to enable readers of the book to be able to exchange information about the clocks they own or are selling to fellow collectors or potential buyers.

To purchase your own copy of Anniversary Clock Identification, contact your local bookseller quoting the ISBN number of the book:



ISBN 978-0-907109-04-4

Copies can be obtained from many Clock Parts Distributors, online booksellers, on Ebay or direct from the distributors.

Many Public Libraries will obtain books by request.

**Distributed by Meadows & Passmore Ltd.**  
**1 Ellen Street, Portslade, Brighton BN41 1EU sales@m-p.co.uk**

Copyright © Mervyn Passmore 2009

Manufacturer:

**Uhrenfabrik Herr/Reiner**

Model:

**Herr/Reiner Standard Narrow  
Clockwise adjuster**

**44mm x 93mm x 30mm**

Backplate information:

May have:

Uhrenfabrik Herr K.G.

Gütenbach

No (0) JEWELS UNADJUSTED

MADE IN GERMANY

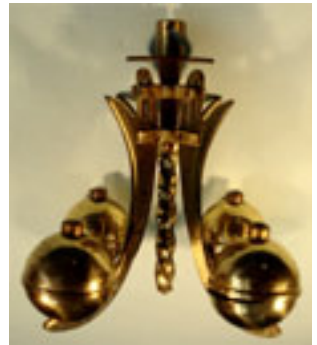


Movement ID code: **HR-SNR**

Notes:

Sometimes found with no maker's name, or with an importer's mark such as the Cuckoo Clock Mfg Co., Euramca Trading Corp., Forestville etc.

Uhrenfabrik Herr and Uhrenfabrik Reiner worked closely together and some parts often appear to have been made from the same tooling.



## Herr/Reiner Standard Narrow Clockwise adjuster 44mm x 93mm x 30mm

### Notes

This model has a pendulum with a screw threaded adjuster that has to be turned clockwise to make it go faster. Most 400 day clocks are adjusted in the opposite direction. Beneath the base the locking lever is slightly more complicated than the average clock.



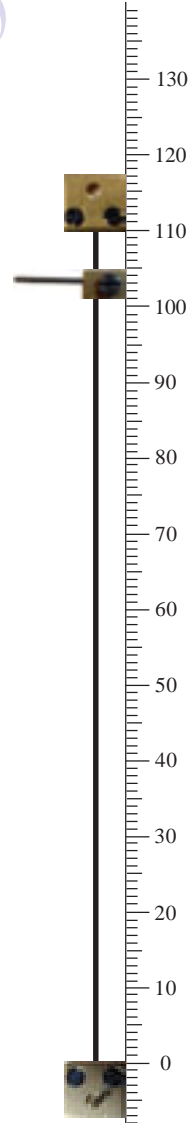
*Clockwise adjuster*

### Rapid Recognition Tips

1: Locking bracket screwed to the underside of the platform.

### Data

Movement ID Code .....	<b>HR-SNR</b>
Plate shape .....	<b>Rectangular</b>
Plate width .....	<b>44mm</b>
Plate height .....	<b>93mm</b>
Gap between plates .....	<b>30mm</b>
Escapement type .....	<b>Dead Beat</b>
Original key size .....	<b>4.50mm</b>
Winding side .....	<b>Left</b>
Pivot adjuster .....	<b>Eccentric nut</b>
Locking device: .....	<b>Beneath the base</b>
Pendulum type/s .....	<b>4-ball</b>
Mainspring barrel .....	<b>22mm x 39mm</b>
Replacement wire .....	<b>No. 18 (Horolovar™ 0.0038"/0.097mm)</b>
Replacement unit .....	<b>HR-SN (Horolovar™ 27B)</b>
Jig settings .....	<b>103mm, 110mm</b>
Mainspring .....	<b>19 x 0.45 x 36mm (1140mm)</b>
Beats per minute .....	<b>8</b>
Bob weight .....	<b>200g.</b>



Examples of clocks fitted with the Herr/Reiner Standard Narrow (clockwise) movement.

