

---

# Anniversary Clock Identification

by  
Mervyn Passmore

Anniversary Clock Identification by Mervyn Passmore contains information, data and images on the majority of mass-produced Anniversary Clocks manufactured during the last 100 years.

This document is a small extract from the book, but please remember that these pages are copyright, and are normally only available to readers of the book.

This document is provided electronically to enable readers of the book to be able to exchange information about the clocks they own or are selling to fellow collectors or potential buyers.

To purchase your own copy of Anniversary Clock Identification, contact your local bookseller quoting the ISBN number of the book:



ISBN 978-0-907109-04-4

Copies can be obtained from many Clock Parts Distributors, online booksellers, on Ebay or direct from the distributors.

Many Public Libraries will obtain books by request.

**Distributed by Meadows & Passmore Ltd.**  
**1 Ellen Street, Portslade, Brighton BN41 1EU sales@m-p.co.uk**

Copyright © Mervyn Passmore 2009

Manufacturer:

**Jahresuhrenfabrik  
A. Schatz & Söhne**

Model:

**JUF Standard early  
66mm x 88mm x 30mm**

Backplate information:

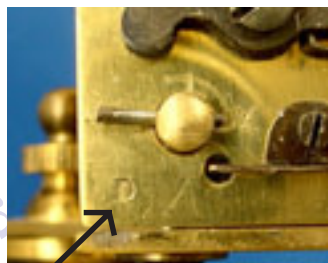
Any of the following, or unmarked  
**Jahresuhrenfabrik G.m.b.H Germany**  
**Elephant logo**  
**Made in Germany**  
**A serial number**



Movement ID code: **JS-SE**

Notes:

To avoid confusion, this movement has been shown on a separate page to the later 49 model. The plates are slightly different but in general terms the movements are the same. This version has no inspection holes and may or may not have guard screws.



There is often a letter or mark here in the corner such as D, F or R on early models.



**JUF Standard early**  
**66 x 88 x 30mm**

### Notes

Several types of suspension bracket were used. The earlier one had the block above the bracket. Later models had the block support beneath the bracket. Others had an easily rotated bracket.

It is common to see the guard screw-holes as just dots on earlier models.

The jig settings shown are for the later bracket. For the earlier model, the fork needs to be lowered by about 4mm. The ready-made units will not suit the swivel bracket.



*Early bracket*



*Swivel bracket*



*Later bracket*

### Rapid Recognition Tips

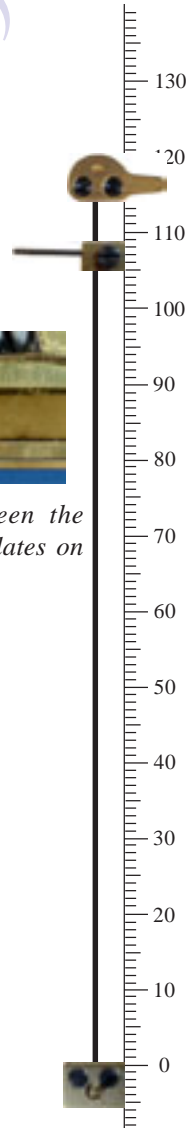
- 1: Many examples have two undrilled dots where the suspension guard screws were to go on later models. The top hole is just above the eccentric nut.
- 2: Often a gap between platform and plates on later models.



*Typical gap between the platform and the plates on later models.*

### Data

Movement ID Code .....	<b>JS-SE</b>
Plate shape .....	<b>Rectangular</b>
Plate width .....	<b>66mm</b>
Plate height .....	<b>88mm</b>
Gap between plates .....	<b>30mm</b>
Escapement type .....	<b>Dead beat</b>
Original key size .....	<b>4.00mm</b>
Winding side .....	<b>Left</b>
Pivot adjuster .....	<b>Eccentric nut</b>
Locking device: .....	<b>Optionally on the guard</b>
Pendulum type/s .....	<b>Disc, 4-ball</b>
Mainspring barrel .....	<b>22.7mm x 40mm</b>
Replacement wire .....	<b>No.20 (Horolovar™ 0.004"/0.102mm)</b>
Replacement unit .....	<b>JS-S (Horolovar™ 6789)</b>
Jig settings .....	<b>107mm, 114mm</b>
Mainspring .....	<b>19 x 0.45 x 36mm (1140mm)</b>
Beats per minute .....	<b>8</b>
Bob weight .....	<b>370/380g.</b>



Examples of clocks fitted with the Jahresuhrenfabrik Standard movement

