

---

# Anniversary Clock Identification

by  
Mervyn Passmore

Anniversary Clock Identification by Mervyn Passmore contains information, data and images on the majority of mass-produced Anniversary Clocks manufactured during the last 100 years.

This document is a small extract from the book, but please remember that these pages are copyright, and are normally only available to readers of the book.

This document is provided electronically to enable readers of the book to be able to exchange information about the clocks they own or are selling to fellow collectors or potential buyers.

To purchase your own copy of Anniversary Clock Identification, contact your local bookseller quoting the ISBN number of the book:



ISBN 978-0-907109-04-4

Copies can be obtained from many Clock Parts Distributors, online booksellers, on Ebay or direct from the distributors.

Many Public Libraries will obtain books by request.

**Distributed by Meadows & Passmore Ltd.**  
**1 Ellen Street, Portslade, Brighton BN41 1EU sales@m-p.co.uk**

Copyright © Mervyn Passmore 2009

Manufacturer:

**Konrad Mauch**

Model:

**Koma Midget Early**  
**42mm x 54mm x 20mm**

Backplate information:

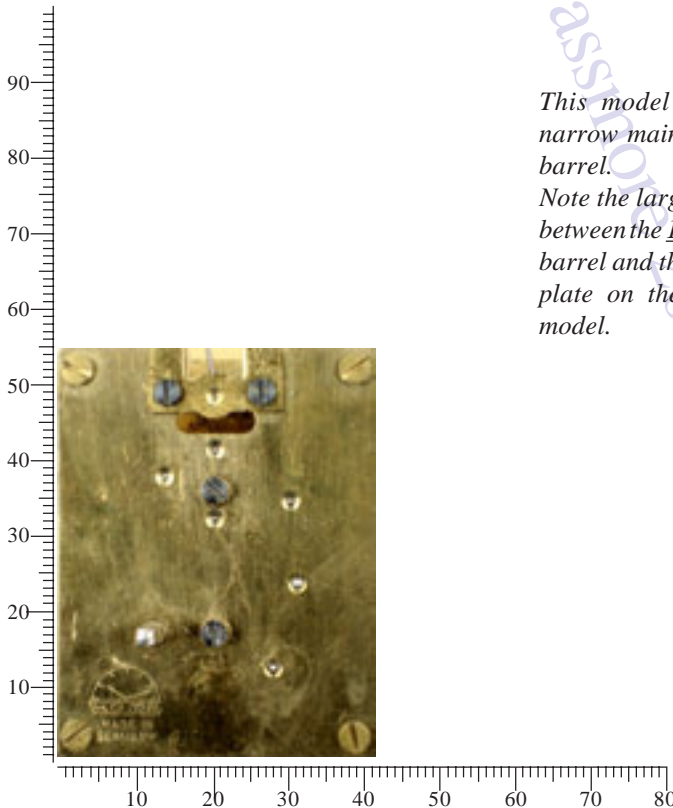
**Koma beneath a semicircular clock  
with hands at 10:12  
Made in Germany**



Movement ID code: **KM-MIDGE**

Notes:

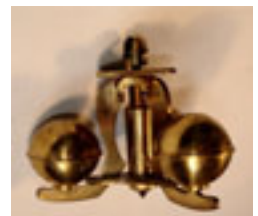
This is the early model, with the weaker mainspring. This proved too weak, and later models had a wider barrel, and the gap between the plates increased from 20mm to 21mm.



*This model has a narrow mainspring barrel.  
Note the larger gap between the 14.5mm barrel and the front plate on the early model.*



5mm (Wide) Gap



# 13-24 Konrad-Mauch

Anniversary Clock Identification by Mervyn Passmore

## Koma Midget Early 42 x 54 x 20mm

### Notes

Lantern cased models may have screwed cases, so a rear hand setter was required. This is a shaft through the hole in the top lefthand corner of the plates, engaging with the motion work.



*The hole for the lantern cased hand setter*

The adjustable arm is on the front plate. The screwed bracket on the back cannot be used as an adjuster because it is too far from the pallets.



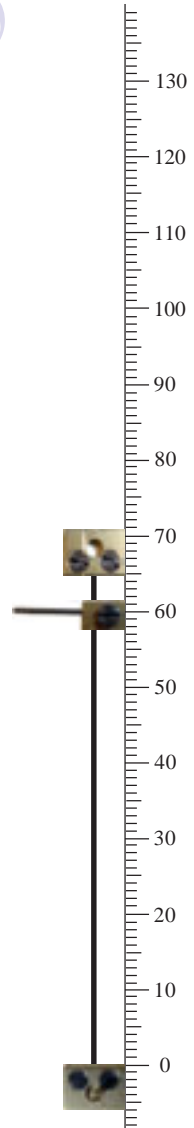
*The tubular guard.*

### Rapid Recognition Tips

Koma plates no longer had the familiar cut-out at the top.

### Data

Movement ID Code .....	<b>KM-MIDGE</b>
Plate shape .....	<b>Rectangular</b>
Plate width .....	<b>42mm</b>
Plate height .....	<b>54mm</b>
Gap between plates .....	<b>20mm</b>
Escapement type .....	<b>Pin pallet</b>
Original key size .....	<b>2.50mm</b>
Winding side .....	<b>Left</b>
Pivot adjuster .....	<b>Adjustable arm</b>
Locking device: .....	<b>Beneath the base</b>
Pendulum type/s .....	<b>3-ball</b>
Mainspring barrel .....	<b>14.5mm x 26mm</b>
Replacement wire .....	<b>No. 5 (Horolovar™ 0.0022"/0.056mm)</b>
Replacement unit .....	<b>KM-MID (Horolovar™ 38A)</b>
Jig settings .....	<b>60mm, 65mm</b>
Mainspring .....	<b>12 x 0.35 x 25mm (700mm)</b>
Beats per minute .....	<b>15</b>
Bob weight .....	<b>90g.</b>



Examples of clocks fitted with the Koma Midget early movement



Passmore 2009