
Anniversary Clock Identification

by
Mervyn Passmore

Anniversary Clock Identification by Mervyn Passmore contains information, data and images on the majority of mass-produced Anniversary Clocks manufactured during the last 100 years.

This document is a small extract from the book, but please remember that these pages are copyright, and are normally only available to readers of the book.

This document is provided electronically to enable readers of the book to be able to exchange information about the clocks they own or are selling to fellow collectors or potential buyers.

To purchase your own copy of Anniversary Clock Identification, contact your local bookseller quoting the ISBN number of the book:



ISBN 978-0-907109-04-4

Copies can be obtained from many Clock Parts Distributors, online booksellers, on Ebay or direct from the distributors.

Many Public Libraries will obtain books by request.

Distributed by Meadows & Passmore Ltd.
1 Ellen Street, Portslade, Brighton BN41 1EU sales@m-p.co.uk

Copyright © Mervyn Passmore 2009

Manufacturer:

Konrad Mauch

Model:

Koma Standard Early

73mm x 85mm x 31mm

Backplate information:

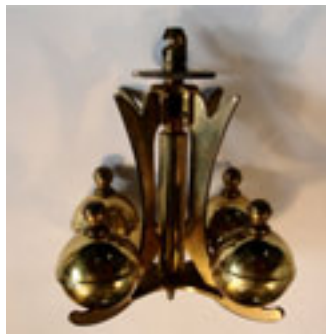
Koma beneath a semicircular clock with the hands at 10:12



Movement ID code: **KM-SE**

Notes:

This is the early model, with the conventional wide plates. The slightly later model had plates 7mm narrower than this model. The trains appear identical. The eccentric nut is on the frontplate.



13-4 Konrad-Mauch

Koma Standard Early 73 x 85 x 31mm

Notes

The eccentric nut is on the frontplate. The bracket on the backplate has no adjustment because it is too far from the pallets.

The square tube suspension guard incorporates two hinged side flaps that hold the bottom block in place. It is not intended to secure the pendulum.



Note the distinctive hinged flaps on the guard.

Rapid Recognition Tips

The only movement 73mm wide with the Koma logo.

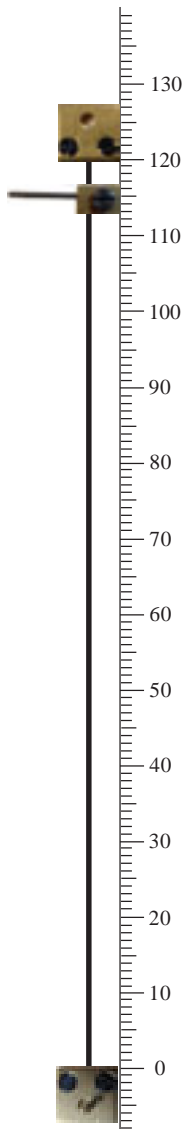
A standard sized movement with a winding shaft on the right is highly likely to have been made by Konrad Mauch.



The distinctive Koma cut-out in most back plates.

Data

Movement ID Code	KM-SE
Plate shape	Rectangular
Plate width	73mm
Plate height	85mm
Gap between plates	31mm
Escapement type	Dead beat
Original key size	4.00mm
Winding side	Right
Pivot adjuster	Eccentric nut
Locking device:	On the guard
Pendulum type/s	4-ball
Mainspring barrel	23mm x40mm
Replacement wire	No. 15 (Horolovar™ 0.0035"/0.089mm)
Replacement unit	KM-S (Horolovar™ 13B)
Jig settings	115mm, 120mm
Mainspring	20 x 0.40 x 38mm (1350mm)
Beats per minute	8
Bob weight	285g.



Examples of clocks fitted with the Konrad Mauch Standard early movement



Passmore 2009