
Anniversary Clock Identification

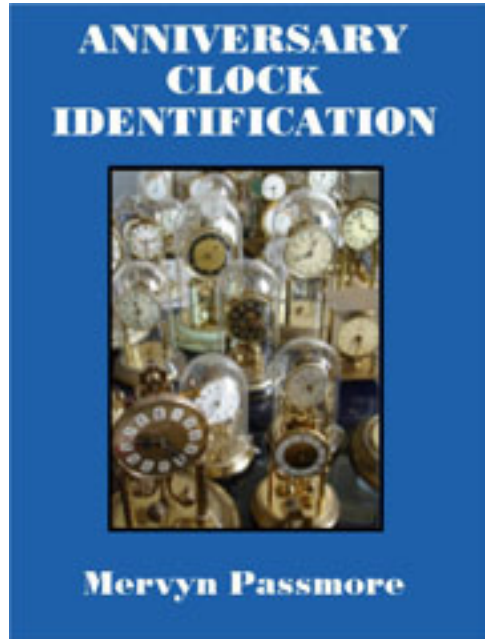
by
Mervyn Passmore

Anniversary Clock Identification by Mervyn Passmore contains information, data and images on the majority of mass-produced Anniversary Clocks manufactured during the last 100 years.

This document is a small extract from the book, but please remember that these pages are copyright, and are normally only available to readers of the book.

This document is provided electronically to enable readers of the book to be able to exchange information about the clocks they own or are selling to fellow collectors or potential buyers.

To purchase your own copy of Anniversary Clock Identification, contact your local bookseller quoting the ISBN number of the book:



ISBN 978-0-907109-04-4

Copies can be obtained from many Clock Parts Distributors, online booksellers, on Ebay or direct from the distributors.

Many Public Libraries will obtain books by request.

Distributed by Meadows & Passmore Ltd.
1 Ellen Street, Portslade, Brighton BN41 1EU sales@m-p.co.uk

Copyright © Mervyn Passmore 2009

Manufacturer:

Kern & Söhne

Model:

**Kern Midget (K.u.S. PI)
44mm x 54mm x 21mm**

Backplate information:

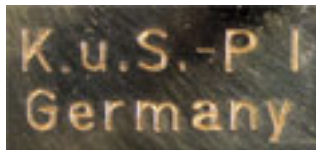
KS Logo

May have Kerne & Söhne, Germany.

May have No (0) jewels, Unadjusted.

K.u.S. PI

Tubular wire guard and clip-on top guard.



Movement ID code: **KS-MIDG**

Notes:

This movement has its pallet arbor pivot hole in a delicate arm that can be adjusted by bending. Marked either KS or K.u.S.PI.

K.u.S. stood for Kern und (&) Söhne.



10-32 Kern

Kern Midget (K.u.S. PI)
44 x 54 x 21mm

Notes

The Kern Midget was made in large numbers in the 1950's.



Tubular suspension guard



Fork guard

Rapid Recognition Tips

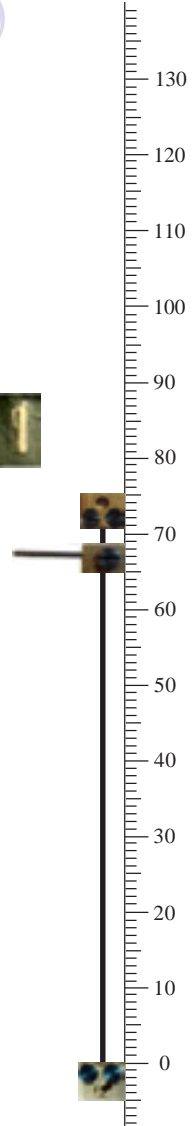
A movement of 44mm x 54mm stamped with the KS logo is a Kern Midget.

K.u.S.PI is a unique mark that applies to this movement, but not all movements have this stamped on them.



Data

| | |
|--------------------------|---|
| Movement ID Code | KS-MIDG |
| Plate shape | Rectangular |
| Plate width | 44mm |
| Plate height | 54mm |
| Gap between plates | 21mm |
| Escapement type | Pin pallet |
| Original key size | 3.75mm |
| Winding side | Left |
| Pivot adjuster | Adjustable arm |
| Locking device: | Beneath the base |
| Pendulum type/s | 4-ball |
| Mainspring barrel | 16mm x 28mm |
| Replacement wire | No. 6 (Horolovar™ 0.0023"/0.058mm) |
| Replacement unit | KS-MD (Horolovar™ 12E) |
| Jig settings | 67mm, 71mm |
| Mainspring | 14 x 0.35 x 25mm (700mm) |
| Beats per minute | 12 |
| Bob weight | 134g. |



Examples of clocks fitted with the Kern Midget movement

