
Anniversary Clock Identification

by
Mervyn Passmore

Anniversary Clock Identification by Mervyn Passmore contains information, data and images on the majority of mass-produced Anniversary Clocks manufactured during the last 100 years.

This document is a small extract from the book, but please remember that these pages are copyright, and are normally only available to readers of the book.

This document is provided electronically to enable readers of the book to be able to exchange information about the clocks they own or are selling to fellow collectors or potential buyers.

To purchase your own copy of Anniversary Clock Identification, contact your local bookseller quoting the ISBN number of the book:



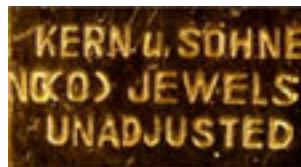
ISBN 978-0-907109-04-4

Copies can be obtained from many Clock Parts Distributors, online booksellers, on Ebay or direct from the distributors.

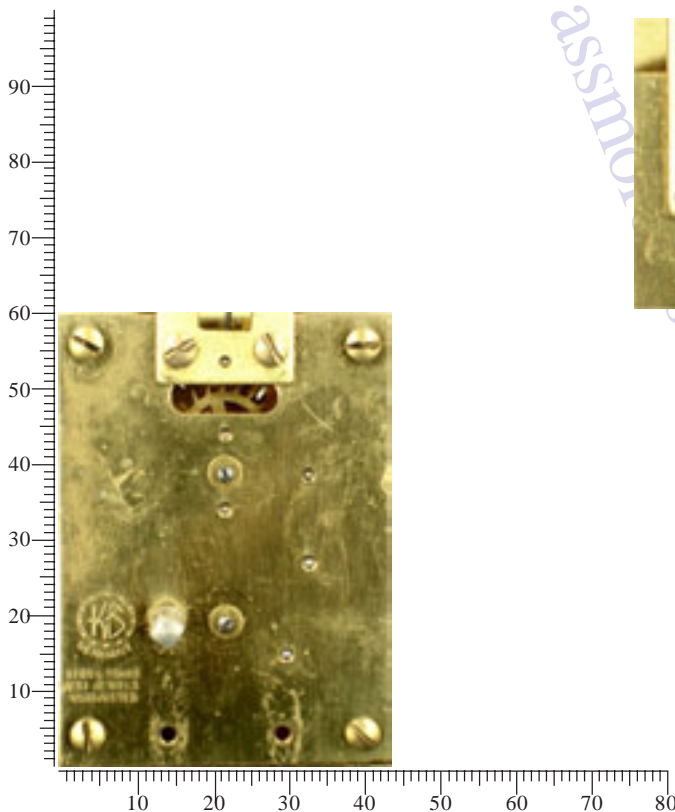
Many Public Libraries will obtain books by request.

Distributed by Meadows & Passmore Ltd.
1 Ellen Street, Portslade, Brighton BN41 1EU sales@m-p.co.uk

Copyright © Mervyn Passmore 2009

Manufacturer:**Kern & Söhne**Backplate information:**May have:****KS in a dashed double circle****KERN U. SÖHNE GERMANY****NO (0) JEWELS UNADJUSTED**Model:**Kern Miniature****Lefthand wind, bracket****44mm x 60mm x 20mm**Movement ID code: **KS-MLB**Notes:

This model has the winder on the left. Two variations of this model exist. This one has the screwed bracket adjuster. Not to be confused with the model that uses an eccentric nut, although the plate dimensions and wheels appear identical.

*Screwed bracket adjuster*

Kern Miniature

Lefthand winder, bracket

44 x 60 x 20mm

Notes

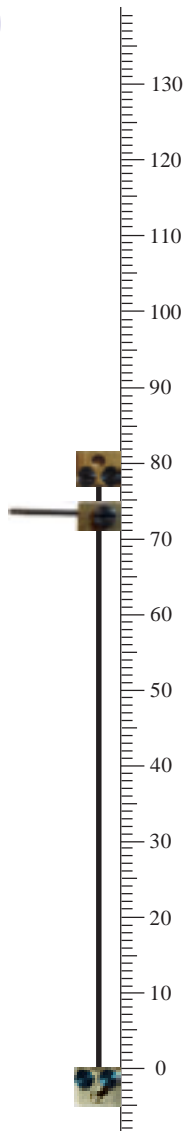
Publisher's note:

The author is aware that a small number of clocks using this movement use a slightly shorter, thinner wire, but has yet to establish exactly how to identify which clock cases are affected in this way. It appears to affect cases that restrict the width of the pendulum.

Rapid Recognition Tips

Data

Movement ID Code	KS-MLB
Plate shape	Rectangular
Plate width	44mm
Plate height	60mm
Gap between plates	20mm
Escapement type	Dead beat
Original key size	3.50mm
Winding side	Left
Pivot adjuster	Screwed bracket
Locking device:	Beneath the base
Pendulum type/s	4-ball
Mainspring barrel	14mm x 27mm
Replacement wire	No. 3 (Horolovar™ 0.0020"/0.051mm)
Replacement unit	KS-ML (Horolovar™ 12C)
Jig settings	73mm, 77mm
Mainspring	12 x 0.35x 25mm (700mm)
Beats per minute	6
Bob weight	255g.



Examples of clocks fitted with the KS Miniature lefthand screwed bracket movement



Passmore 2009