
Anniversary Clock Identification

by
Mervyn Passmore

Anniversary Clock Identification by Mervyn Passmore contains information, data and images on the majority of mass-produced Anniversary Clocks manufactured during the last 100 years.

This document is a small extract from the book, but please remember that these pages are copyright, and are normally only available to readers of the book.

This document is provided electronically to enable readers of the book to be able to exchange information about the clocks they own or are selling to fellow collectors or potential buyers.

To purchase your own copy of Anniversary Clock Identification, contact your local bookseller quoting the ISBN number of the book:



ISBN 978-0-907109-04-4

Copies can be obtained from many Clock Parts Distributors, online booksellers, on Ebay or direct from the distributors.

Many Public Libraries will obtain books by request.

Distributed by Meadows & Passmore Ltd.
1 Ellen Street, Portslade, Brighton BN41 1EU sales@m-p.co.uk

Copyright © Mervyn Passmore 2009

Manufacturer:

Nisshin Clock Industrial Co.

Model:

**Master Standard, round corners
50mm x 91mm x 30mm**

Backplate information:

Master with Fleur de Lys above and below the name.

Nisshin Clock Industrial Co. Ltd. Japan

May have a square cut-out at the bottom of the backplate.



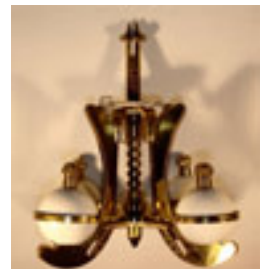
Movement ID code: **NC-SR**

Notes:

Distinctive rounded cornered plates. Not to be confused with the model that has square corners.



May have a cut-out in the backplate



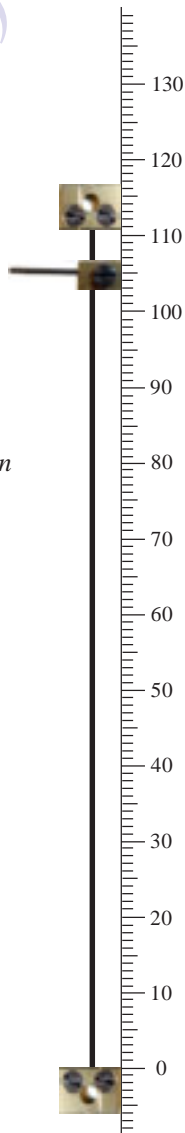
14-4 Master(Nisshin)

Master Standard, round corners
50 x 91 x 30mm

Notes

The escape wheel pivot has an adjustable arm as well as the anchor pivot.

The bob has no hook. It is pinned in position.
If you make your own unit, use an inverted top block at the bottom.



Rapid Recognition Tips

Master clocks have nuts on the backplates, unlike the majority of movements which have screws or tapered pins.

The pendulum is pinned in position.

Data

Movement ID Code **NC-SR**
Plate shape **Rectangular**
Plate width **50mm**
Plate height **91mm**
Gap between plates **30mm**
Escapement type **Dead beat**
Original key size **4.00mm**
Winding side **Left**
Pivot adjuster **Adjustable arm**
Locking device: **Beneath the base**
Pendulum type/s **4-ball**
Mainspring barrel **23mm x 44mm**
Replacement wire **No. 14 (Horolovar™ 0.0034"/0.086mm)**
Replacement unit **NC-S (Horolovar™ 45A)**
Jig settings **105mm, 111mm**
Mainspring **19 x 0.40 x 38mm (1350mm)**
Beats per minute **8**
Bob weight **145g.**

Examples of clocks fitted with the Master Standard movement

