
Anniversary Clock Identification

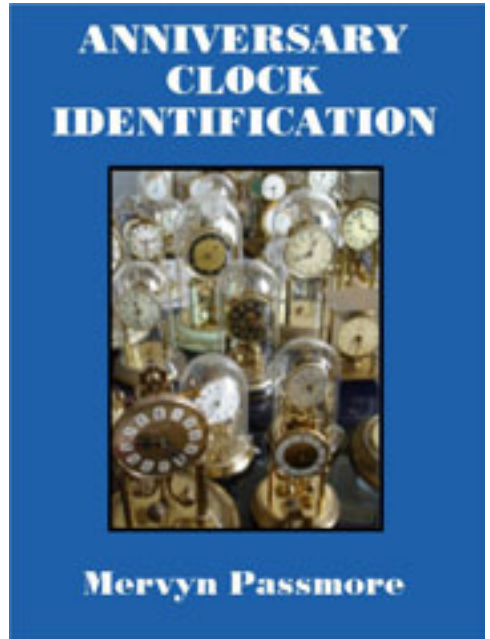
by
Mervyn Passmore

Anniversary Clock Identification by Mervyn Passmore contains information, data and images on the majority of mass-produced Anniversary Clocks manufactured during the last 100 years.

This document is a small extract from the book, but please remember that these pages are copyright, and are normally only available to readers of the book.

This document is provided electronically to enable readers of the book to be able to exchange information about the clocks they own or are selling to fellow collectors or potential buyers.

To purchase your own copy of Anniversary Clock Identification, contact your local bookseller quoting the ISBN number of the book:



ISBN 978-0-907109-04-4

Copies can be obtained from many Clock Parts Distributors, online booksellers, on Ebay or direct from the distributors.

Many Public Libraries will obtain books by request.

Distributed by Meadows & Passmore Ltd.
1 Ellen Street, Portslade, Brighton BN41 1EU sales@m-p.co.uk

Copyright © Mervyn Passmore 2009

Manufacturer:

Siegfried Haller

Model:

**Haller Standard Narrow early
42mm x 84mm x 31mm**

Backplate information:

No(0) jewels

Unadjusted

Germany

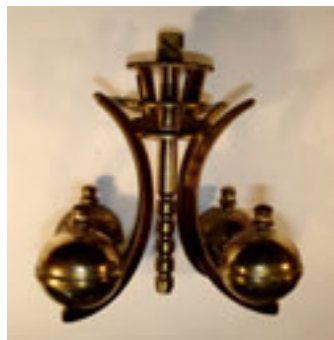


Movement ID code: **SH-SNE**

Notes:

Not to be confused with the later Siegfried Haller movement that looks similar but has a suspension guard that is fixed with four pegs, and makes considerable use of plastic.

This model uses a tubular metal guard.



16-4 Siegfried Haller

Anniversary Clock Identification by Mervyn Passmore

Haller Standard Narrow early
42 x 84 x 31mm

Notes

The adjuster is an eccentric nut on the front plate. The position of the screwed bracket is fixed.

Metal base.

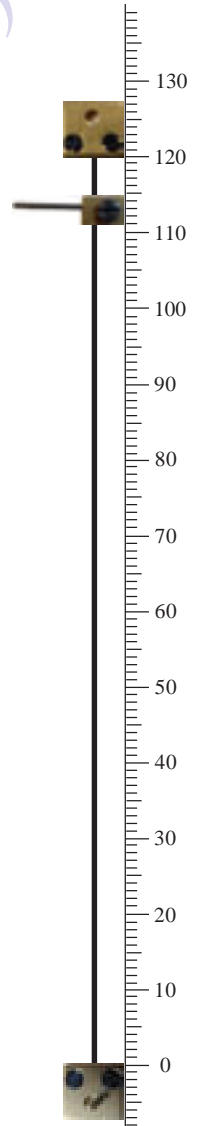


*Metal guard
fixed with two
screws*

Rapid Recognition Tips

Data

Movement ID Code **SH-SNE**
Plate shape **Rectangular**
Plate width **42mm**
Plate height **84mm**
Gap between plates **31mm**
Escapement type **Dead beat**
Original key size **4.00mm**
Winding side **Right**
Pivot adjuster **Eccentric nut (front)**
Locking device: **Beneath the base**
Pendulum type/s **4-ball**
Mainspring barrel **21.5mm x 41mm**
Replacement wire **No. 18 (Horolovar™ 0.0030"/0.076mm)**
Replacement unit **SH-SN (Horolovar™ 42A)**
Jig settings **113mm, 120mm**
Mainspring **18 x 0.45 x 38mm (1120mm)**
Beats per minute **8**
Bob weight **185g.**



Examples of clocks fitted with the Haller Standard narrow early movement

