

---

# Anniversary Clock Identification

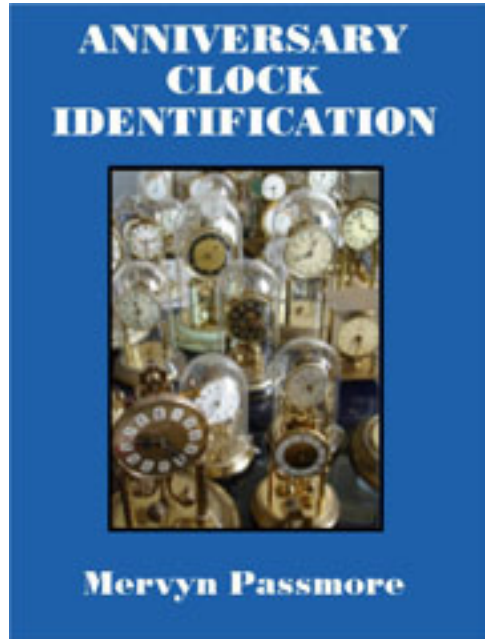
by  
Mervyn Passmore

Anniversary Clock Identification by Mervyn Passmore contains information, data and images on the majority of mass-produced Anniversary Clocks manufactured during the last 100 years.

This document is a small extract from the book, but please remember that these pages are copyright, and are normally only available to readers of the book.

This document is provided electronically to enable readers of the book to be able to exchange information about the clocks they own or are selling to fellow collectors or potential buyers.

To purchase your own copy of Anniversary Clock Identification, contact your local bookseller quoting the ISBN number of the book:



ISBN 978-0-907109-04-4

Copies can be obtained from many Clock Parts Distributors, online booksellers, on Ebay or direct from the distributors.

Many Public Libraries will obtain books by request.

**Distributed by Meadows & Passmore Ltd.**  
**1 Ellen Street, Portslade, Brighton BN41 1EU sales@m-p.co.uk**

Copyright © Mervyn Passmore 2009

Manufacturer:

**Siegfried Haller**

Model:

**Haller Standard Narrow late  
42mm x 84mm x 31mm**

Backplate information:

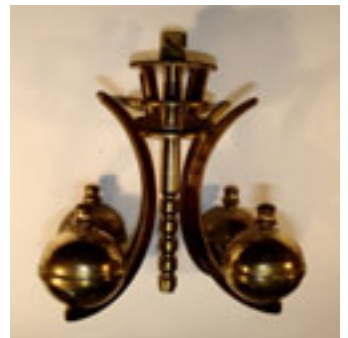
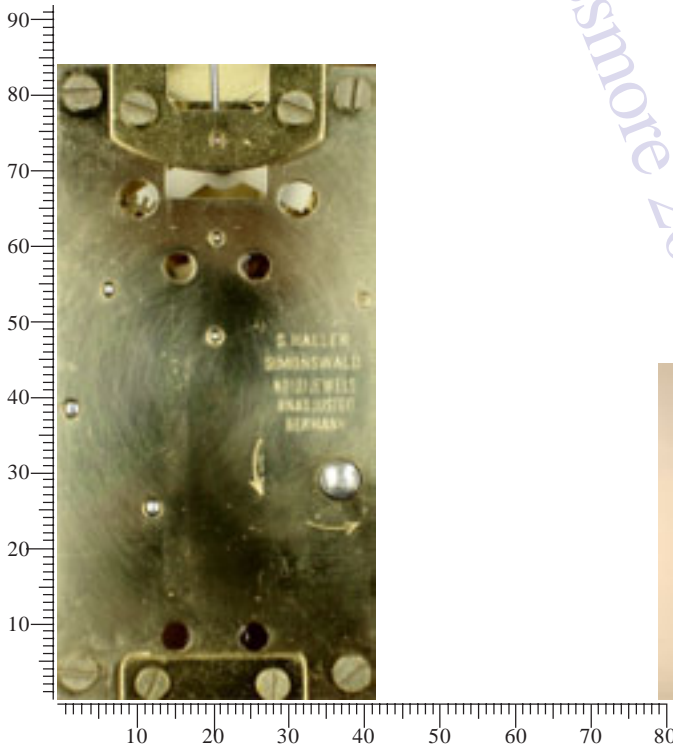
**S. Haller  
Simonswald  
No (0) jewels  
Unadjusted  
Germany**



Movement ID code: **SH-SNL**

Notes:

Not to be confused with the earlier Haller movement that looks similar but has a suspension guard that is fixed with two central screws, and uses no plastic. This model makes considerable use of plastic, and in many ways they are of a lower quality than similar models of that period.



# 16-8 Siegfried Haller

Anniversary Clock Identification by Mervyn Passmore

**Haller Standard Narrow late**  
**42 x 84 x 31mm**

## Notes

The adjuster is an adjustable arm on the front plate. The screwed bracket is fixed.

This movement makes considerable use of plastic, and even the escapement is partly made of white plastic.

Distinctive winding direction arrows are often by the right-hand sided winding shaft, probably because this movement winds in an anticlockwise direction, unlike the majority of anniversary clocks.

## Rapid Recognition Tips

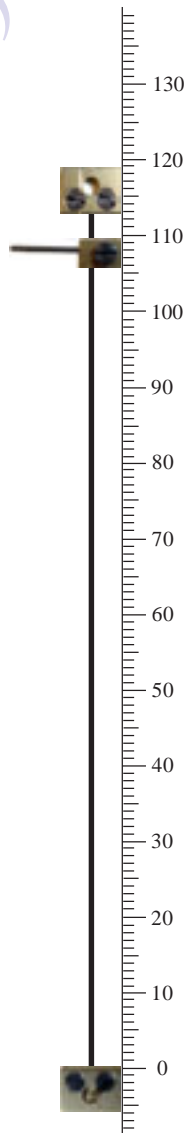
Plastic escapement parts.

## Data

Movement ID Code ..... **SH-SNL**  
Plate shape ..... **Rectangular**  
Plate width ..... **42mm**  
Plate height ..... **84mm**  
Gap between plates ..... **31mm**  
Escapement type ..... **Dead beat**  
Original key size ..... **4.00mm**  
Winding side ..... **Right**  
Pivot adjuster ..... **Adjustable arm (front)**  
Locking device: ..... **Beneath the base**  
Pendulum type/s ..... **4-ball**  
Mainspring barrel ..... **21.5mm x 41mm**  
Replacement wire ..... **No. 10 (Horolovar™ 0.003"/0.076mm)**  
Replacement unit ..... **SH-SN (Horolovar™ 42A)**  
Jig settings ..... **108mm, 113mm**  
Mainspring ..... **18 x 0.45 x 38mm (1120mm)**  
Beats per minute ..... **8**  
Bob weight ..... **185g.**



*4 hole  
push-in  
guard*



Examples of clocks fitted with the Siegfried Haller Standard narrow movement



Mervyn Passmore 2009